

RONGDA

**PACIFIC PTE LTD &
BUILDING CONTRACTOR**



荣达太平洋私人有限公司

RONGDA PACIFIC PTE LTD

新加坡



RONGDA

**PACIFIC PTE LTD
BUILDING CONTRACTOR**

Business Dpt & Drafting Dpt

61 Woodlands Industrial Park E9 Premium,
#02-14(level 2), Singapore 757047

Tel: +65 6264 9511 Fax: +65 62649513

Website: www.rongdacontractor.com

Email: linqm@rongdacontractor.com

enquiry@rongdacontractor.com

Project Dpt

61 Woodlands Industrial Park E9 Premium,
#02-15/#02-16 (Level 2), Singapore 757047

Production Facilities

61 Woodlands Industrial Park E9 Premium,
#02-15, #02-16/26 (Level 1), Singapore 757047

Services:

ID Contract / Projects • ID Consultation

- ID Fit-Out Specialist Works • Complex Carpentry Works
- Custom Made Furniture • Finishing Metal Works • A&A Works
- Design & Build • A&A • Commercial • F&B
- Conservation and Restoration works

Singapore • Asia • Middle East



Company Profile

Rongda was founded in Singapore in 2006 by Mr. Lin Yurong, through creativity and dynamic resources. Rongda has made its mark in the contract businesses, interior design, drafting, interior fit-out Industry, spray work, metal works, Rongda operates its production space and facilities at E9 Premium building, with its own design office/drafting dpt. Rongda has a total work force of over 80 skilled workers in the highly customized premium interior works, typically carpentry, paneling, partition, finish metal, ceiling, door works electrical, lighting, cabling works, ACMV works and smart home solutions.

Along with the competency in the related knowledge, skill and experience, today Rongda prides itself as a highly capable architectural and interior fit-out specialist serving a board portfolio of Clients.

From assisting in the feasibility of the design to the physical implementation and completion of the project, Rongda offers a total flexible and fully customized end-to-end interior solution. With our industry's knowledge, skills and experience, we are confident of meeting and exceeding customer expectation in the key areas with quality, timeliness and cost control.

We are proud to be the appointed contractor and project manager of different Industries of interior fitting-out and construction A&A works in Asia-Pacific region. We also have a pool of sub-contractors for metal works, masonry works, glazing works, finishing works, M&E works and etc., which are carefully selected for reliability and good quality workmanship.

The success of our company are mainly due to the support and trust that we have gained from many of our valued and satisfied clients, designers and consultants, the strong commitment that our company emphasizes in product quality, reliability, cost control, project management and service warranty, we will continue to strive for excellence perfection and stringent quality control within our entire organization.

Our strength lies with our strongly committed project management team who focuses on continuous improvement, problem solving as well as quality control. Rongda has a team of competent workers, who are skillful in complicated joinery, interior and exterior works.

Our goal however is much higher than what we could achieve to-date, and we are proud to be a company which, more than anything the clients, designers and consultants can trust.

OUR PROJECTS REFERENCES

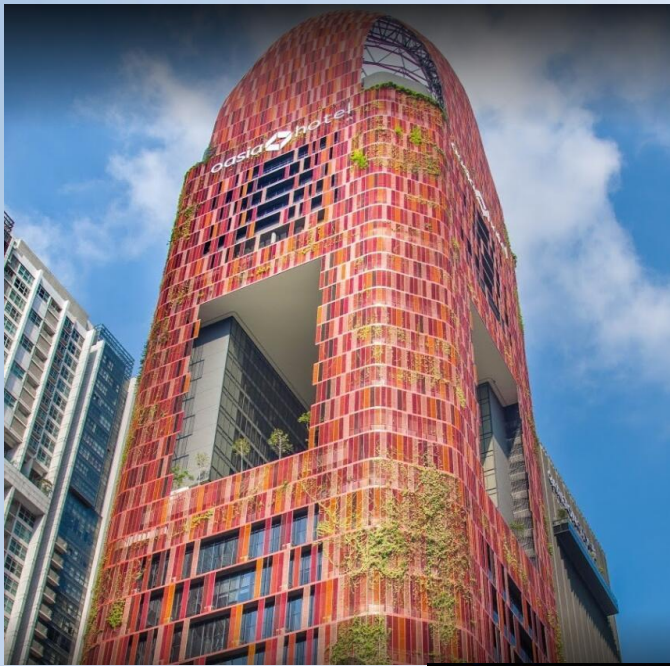
Victoria's Secret Project

Interior Works



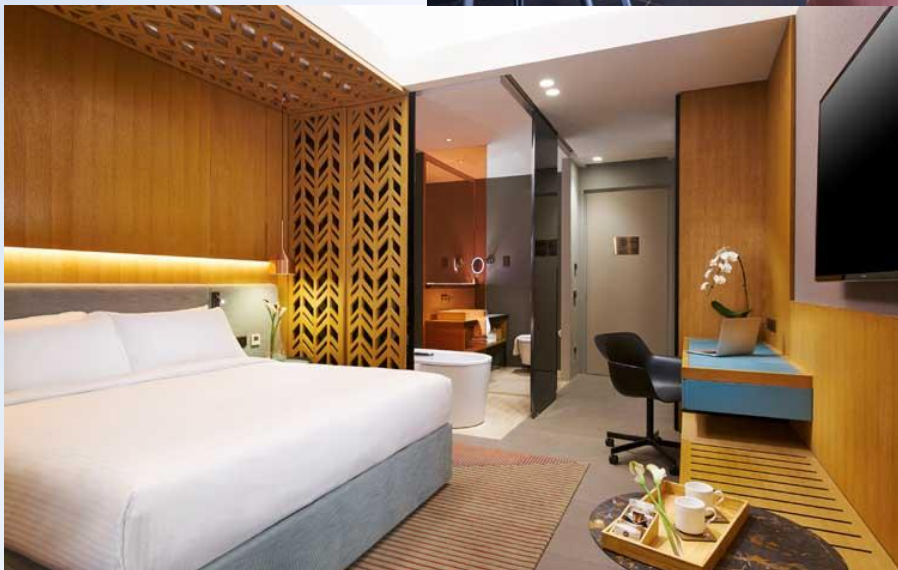
RONGDA

**PACIFIC PTE LTD
BUILDING CONTRACTOR**



Oasia Hotel Project

Interior Works and Installations



Michael Kors Project

Interior Related works

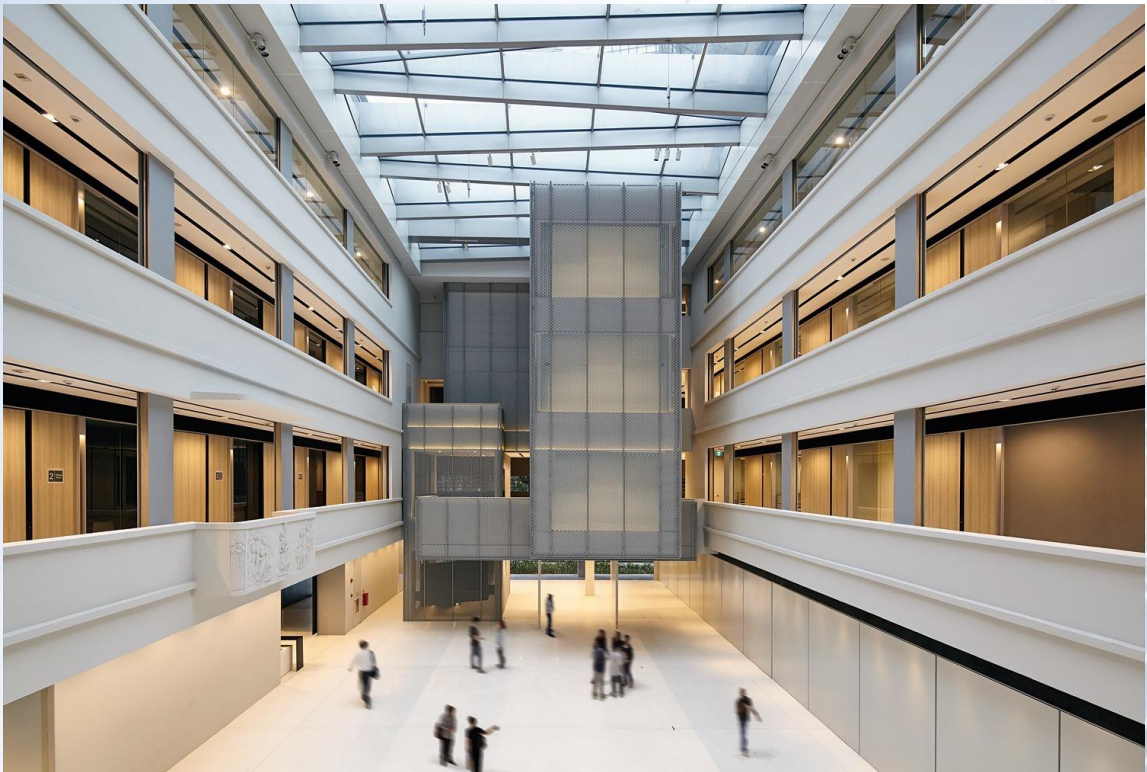
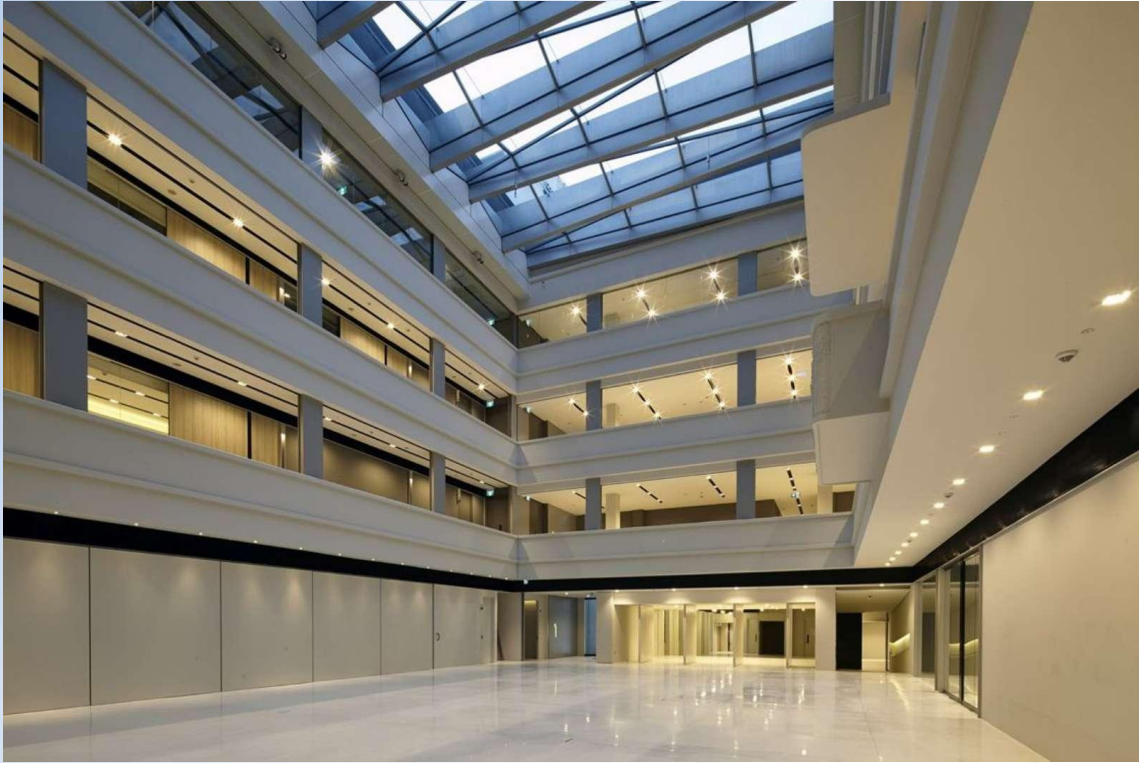


National Design Centre @ Middle Road

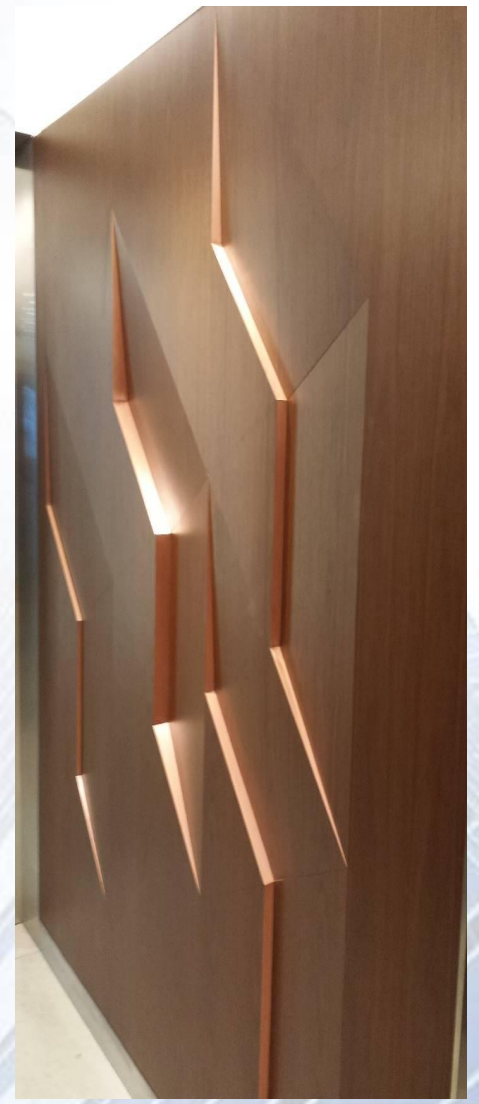
RONGDA

PACIFIC PTE LTD
BUILDING CONTRACTOR

Supply & Install of Interior Works



Interior Works

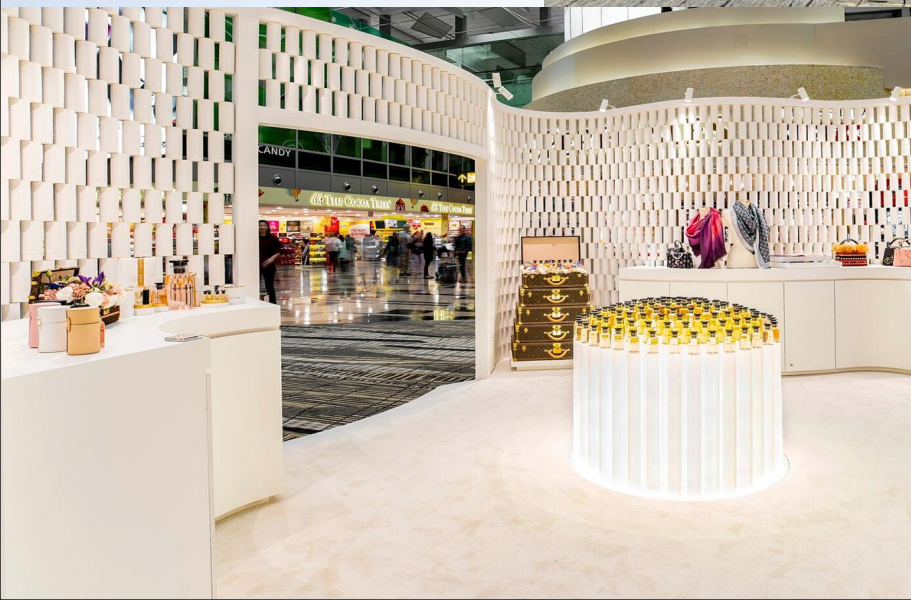


LV Pop Up Store @ Changi Airport T3

RONGDA

PACIFIC PTE LTD
BUILDING CONTRACTOR

New product launch Event Store for Louis Vuitton



Supply & Install of Interior Works-Retail



Apple Retail Store @ Changi Jewel

Installation of Imported Furnitures



SES @ Vivo City- Samsung

Supply & Install of Interior Works

RONGDA

PACIFIC PTE LTD
BUILDING CONTRACTOR



National Heart Center

Supply & Install of Interior Works



East Village Hotel

RONGDA

PACIFIC PTE LTD
BUILDING CONTRACTOR

Supply & Install of Interior Work



Mandarin Hotel Project

RONGDA

PACIFIC PTE LTD
BUILDING CONTRACTOR

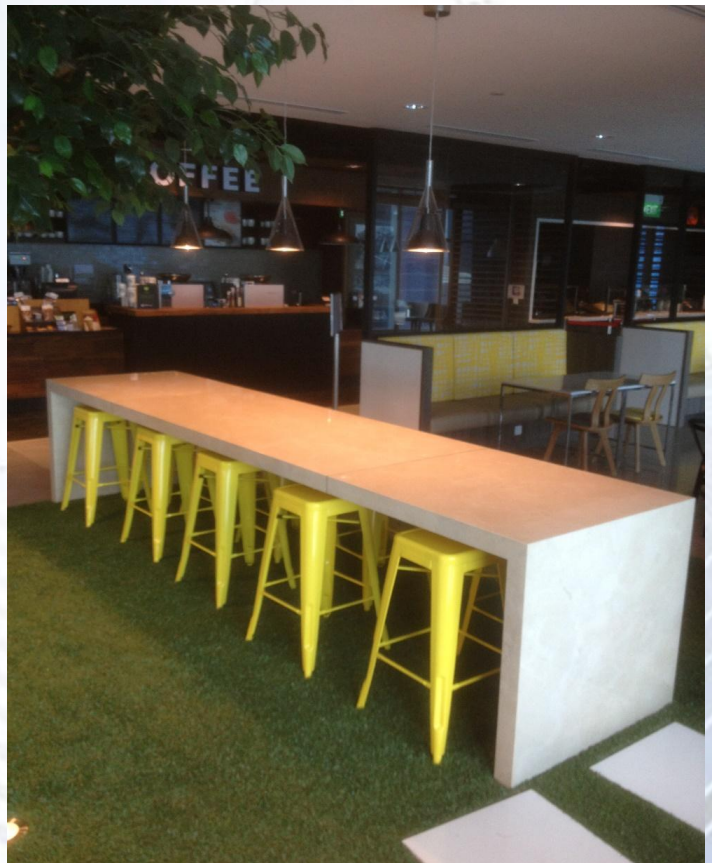
Supply & Install of Interior Work



DBS Project



Supply & Install of
Interior Work





Regent Hotel Manhattan Bar -High End F&B



Private Projects

Design, Supply & Install Interior Works for
Condos Developments



Retail Outlets

Supply and Install Retail
Customized Interior Works





MPA @ PSA Building - Commercial Office

Supply & Install of Interior Works



Cloud Kitchen

Interior Works-F&B



WISMA ATRIA #B1-14

Supply & Install of Interior Works





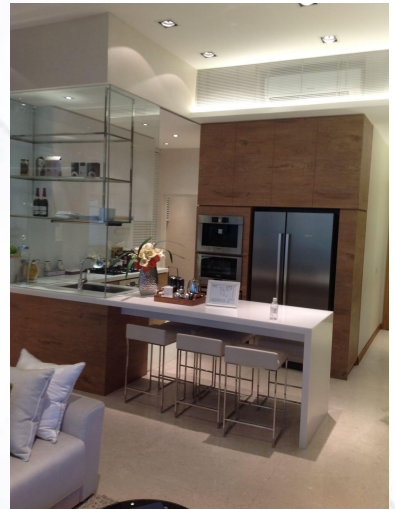
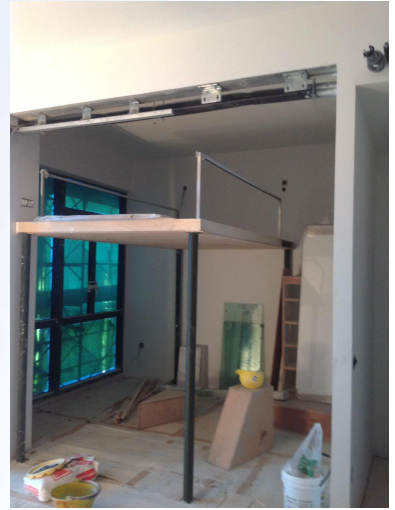
Royal Plaza Novena Medical Suites

Supply & Install of Interior
Works

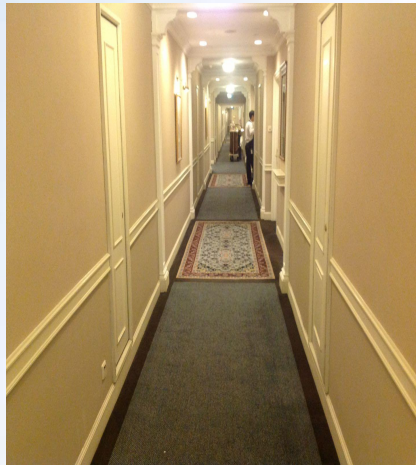
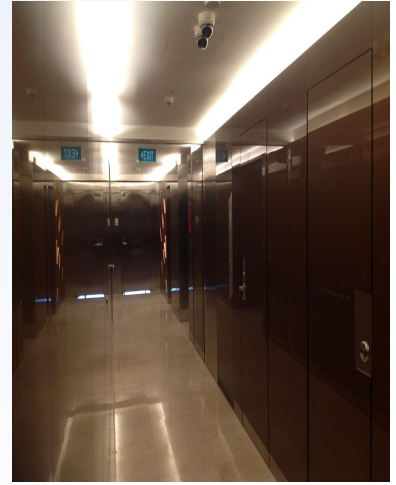


Condo & Residences

Design and Build Interior Works-Big Quantity Only



Hotel & Office Building Design and Art Works



Samsung Smart Home Corner Nee Ann City & Funan IT Mall



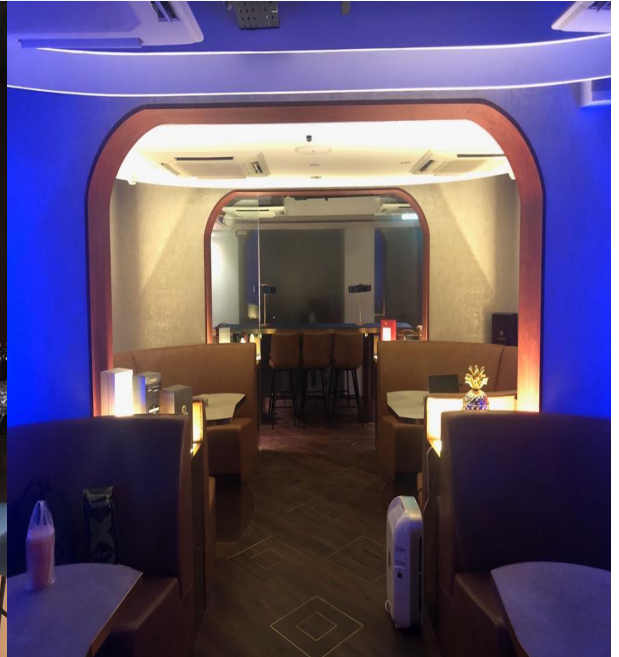
Samsung @ Plaza Singapore

Large Scale Event Supply & Install



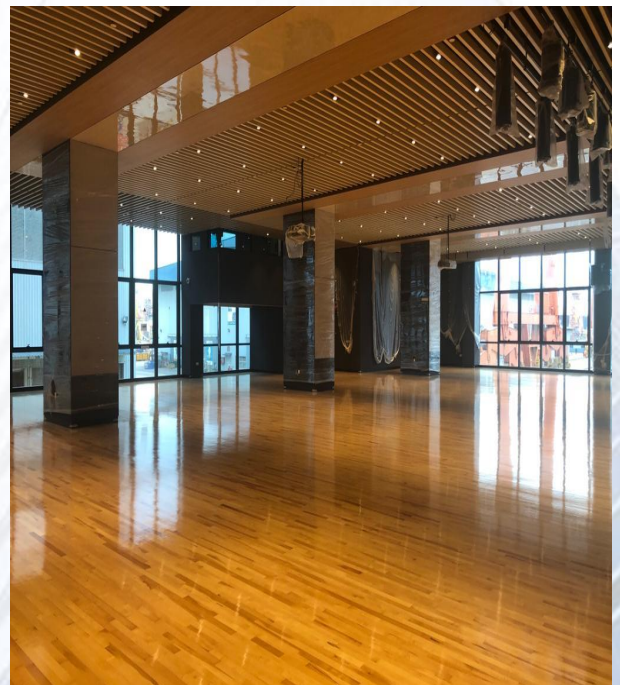
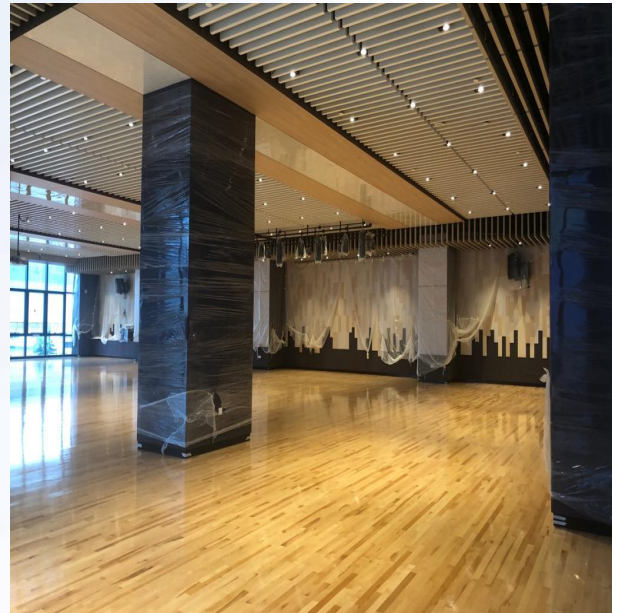
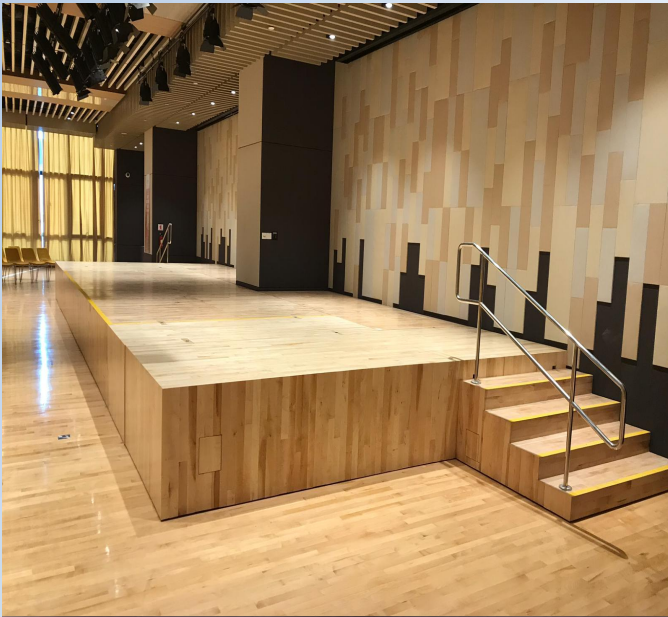
BAR @ MAXWELL ROAD

Supply & Install of Interior Works



SHIPYARD @ TUAS

Large Scale Supply & Install of Interior Works



OUR FACILITIES

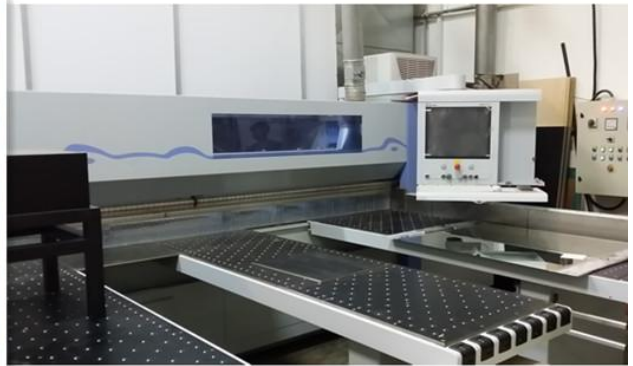


Office

RONGDA

**PACIFIC PTE LTD
BUILDING CONTRACTOR**





Our Production Facilities

CNC



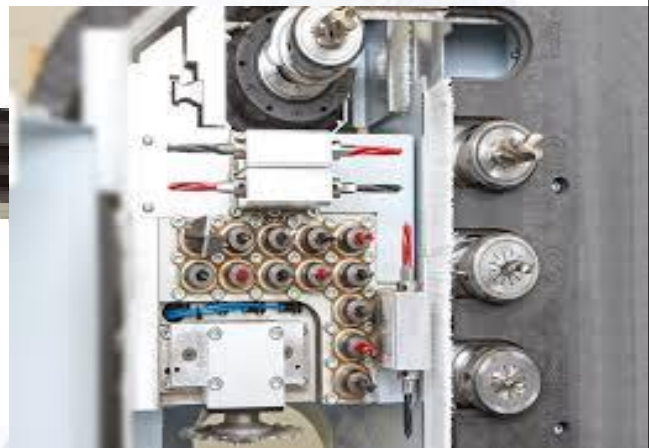
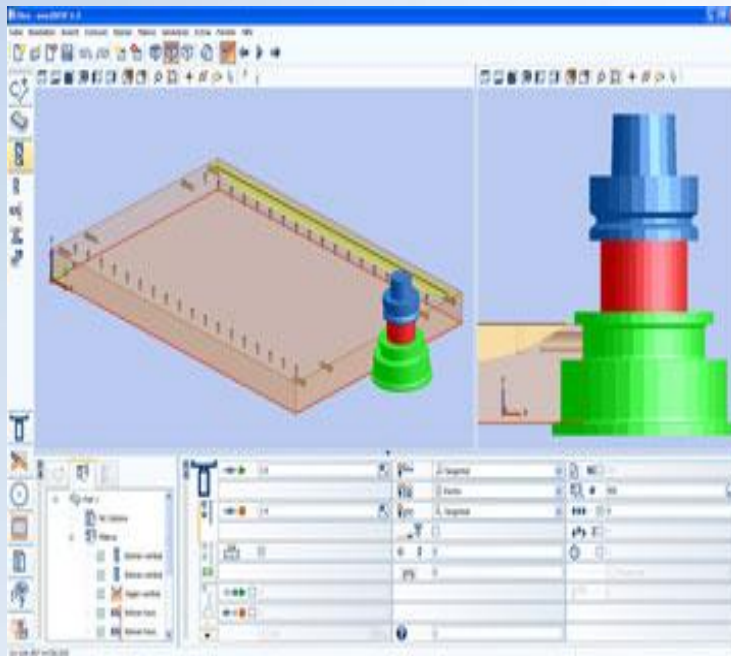
Our Software Advantages

InteriCAD™ T6



Our Machines & Control Softwares

★★★★★
woodWOP



CNC Processing

CUT RITE

M O D U L A R

Optimization and Production Software



Cutrite for Panel Optimising and Sizings

Edging Unit

Unique and Unbeatable – The 1905 Multigluing System

- Extremely thin glue application with slotted nozzle.
- For glues in cartridge or granule form.
- Can hold up to four cartridges [Fig. 1] or up to 1.5 kg of granules [Fig. 3] (Optional: 5-kg shaft) [Fig. 2]
- Highly flexible in daily use, time-saving and power-saving.
- Easy change of shaft – just fill with new glue and continue working.
- Flushing hole for automatic cleaning system – e.g. rinsing out PUR glues.
- Glue does not burn – can be processed completely.



Fully Automatic Edging Machine for Premium Edging Result

Singapore Local Facilities

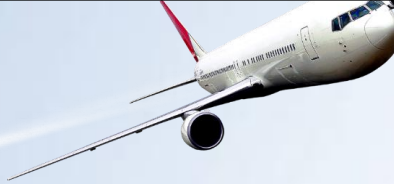
RONGDA

PACIFIC PTE LTD
BUILDING CONTRACTOR



Projects Completed and Ongoing





Rongda had successfully completed more than 300 major projects since established

Project List from year 2006 to present

S.NO	PROJECT	DESCRIPTION OF WORK	CLIENT	YEAR
1	Singapore Chame Chamber	A & A work	Incorporated Builders Pte Ltd	Ongoing
2	CTSQ	A & A work	Kimly Construction Pte Ltd	Ongoing
3	EC Doors	Doors Installation	Kimly Construction Pte Ltd	Ongoing
4	NLCS	A & A Works	HPC Builders Pte Ltd	Ongoing
5	Heaton Scotts	ID Works	Summer Production Pte Ltd	Ongoing
6	13 Beechwood Grove	A & A Works	Sperry Decor	Ongoing
7	DBS @ Changi Business Park	ID Works	Yongqiang Contract & Construction Pte Ltd	Ongoing
8	Yuhan @ Changi	ID Works	Alpha Formation Pte Ltd	Ongoing
9	6 FABER GROVE	A & A Works	YOON WAI HAN	Ongoing
10	Mendaki @ 500 Corporation Rd	A & A Works	Aquasio Design Associates Pte Ltd	Ongoing
11	218 Pandan Loop	ID Works	KEP Engineering Pte Ltd	Ongoing
12	Little India hotel Mockup	A & A work	Zhaplin Contracts Pte Ltd	Ongoing
13	Capri Hotel	ID Works	Nakano Singapore (Pte) Ltd	Ongoing
14	The Alps	ID Works	Pace Pte Ltd	Ongoing
15	1078 SEMBAWANG ROAD	ID Works	Metrocon Design & Build Pte Ltd	Ongoing
16	Bukit Timah Residence	ID Works	De Spazio	Ongoing
17	Guthrie House	ID Works	EID Projects Pte Ltd	2019
18	Yuhan @ Jem	ID Works	Alpha Formation Pte Ltd	2019
19	MPA @ PSA Building	A & A work	Amika Interior + MEP Pte Ltd	2019
20	Bar @ Maxwell Road	ID Works	Alpha Formation Pte Ltd	2019
21	Shapard	ID Works	HPC Builders Pte Ltd	2019
22	VHOTEL	ID Works	EID Projects Pte Ltd	2019
23	Toys "R" US @ Great World City - MC1	ID Works	Ro-Source Design Pte Ltd	2019
24	30 Blonhome	ID Works	Tien Seng Engineering Pte Ltd	2019
25	WISMA ATRIA #B1-144	ID Works	Summer Production Pte Ltd	2019
26	Lake Grande	ID Works	China Construction (South Pacific) Development Co Pte Ltd	2019
27	19 Jalan Lapang	A & A work	Metrocon Design & Build Pte Ltd	2019
28	79 Anson Road	A & A work	EID Projects Pte Ltd	2019
29	Royal Plaza Novena Medical Suites	ID Works	TID Associates Pte Ltd	2019
30	NEO OFFICE	ID Works	EID Projects Pte Ltd	2019
31	JTC SPACETAMPINES	ID Works	Amika Interior + MEP Pte Ltd	2019
32	Yuhan @ Funan	ID Works	Alpha Formation Pte Ltd	2019
33	Yuhan @ Ion	ID Works	Alpha Formation Pte Ltd	2019
34	SIMPLE REPUBLIC	ID Works	Alpha Formation Pte Ltd	2019
35	Australia International School (AUS)	ID Works	Amika Interior + MEP Pte Ltd	2019
36	APPLE RETAIL STORE #736 AT JEWEL	A & A work	ISG Singapore	2019
37	36 JALAN TANJONG	ID Works	Metrocon Design & Build Pte Ltd	2019
38	55 Jalan Angin Laut	ID Works	Zhaplin Contracts Pte Ltd	2019
39	Chuan Downtown - Wall panel to hotel rooms	ID Works	Tanglin Corporation Pte Ltd	2018-2019
40	break @ Tampines	ID Works	Alpha Formation Pte Ltd	2018
41	Moi Heong Yuan Dessert	ID Works	Alpha Formation Pte Ltd	2018
42	APL Jurong	ID Works	Alpha Formation Pte Ltd	2018
43	NTUC Income Bedok	A & A work	Aquasio Design Associates Pte Ltd	2018
44	break @ Vista	ID Works	Alpha Formation Pte Ltd	2018
45	Horner	ID Works	Alpha Formation Pte Ltd	2018
46	Powellham @ Paragon	ID Works	Design Delta Pte Ltd	2018
47	Holland Plaza #B1-466	ID Works	Alpha Formation Pte Ltd	2018
48	15 Warren Close	ID Works	De Spazio	2018
49	Aperia Mall - Yuhon	ID Works	Alpha Formation Pte Ltd	2018
50	Timber X The Arts House	ID Works	Alpha Formation Pte Ltd	2018
51	break @ My Village	ID Works	Alpha Formation Pte Ltd	2018
52	268 Bishan St 24 #04-168	ID Works	Alpha Formation Pte Ltd	2018
53	Whalecod L6	ID Works	Alpha Formation Pte Ltd	2018
54	Jing Mo Koo Belgavia	ID Works	De Spazio	2018
55	Parkroyal Hotel	ID Works	Dhideo Pte Ltd	2018
56	135 Springvale View	ID Works	Genesis Interior Design Pte Ltd	2018
57	SGH Bld 5	ID Works	EID Projects Pte Ltd	2018
58	BOI Office	A & A work	HSL Design Pte Ltd	2018
59	New Office @ Haw Par Centre	ID Works	J. & Rai Concept Group Pte Ltd	2018
60	The Tenerville Residence	ID Works	Ms Jasmine Hong	2018
61	Healthway @ Jurong West Ave 1 #01-803	ID Works	NLE Builder Pte Ltd	2018
62	Dr. Clabo @ ION Orchard	Large Skill Event	Obra Asia Limited	2018
63	Dr. Clabo @ Istan SCOTTS	Large Skill Event	Obra Asia Limited	2018
64	Dr. Clabo @ Istan Tampines	Large Skill Event	Obra Asia Limited	2018
65	Bank of Singapore	ID Works	P&K Interior Decoration Pte Ltd	2018
66	Toys "R" US @ Great World City - MC2 to MC3	ID Works	Ro-Source Design Pte Ltd	2018
67	COURTS @ ANG MO KIO	ID Works	Summer Production Pte Ltd	2018
68	BISHAN JUNCTION 8	ID Works	Summer Production Pte Ltd	2018
69	NEW AUDIO WALL	ID Works	Summer Production Pte Ltd	2018
70	MAINTENANCE	ID Works	Summer Production Pte Ltd	2018
71	SGH	ID Works	Shanghai Century Pte Ltd	2018
72	for Residences	Tiling Works	Warnepack & Associates Pte Ltd	2018
73	Raffles Hospital	A & A work	Amika Interior + MEP Pte Ltd	2018
74	Tampines Hub	ID Works	J. & Rai Concept Group Pte Ltd	2018

Project List from year 2006 to present

S.NO	PROJECT	DESCRIPTION OF WORK	CLIENT	YEAR
75	Childcare Centre @ Segar Garden	ID Works	KAR Contract Service Pte Ltd	2018
76	Uniqlo - Yuhon	A & A Works	J. & Rai Concept Group Pte Ltd	2018
77	Temasek Polytechnic	ID Works	Tien Seng Engineering Pte Ltd	2018
78	Seng Kang General Hospital	Installation Works	Falcon Incorporation Pte Ltd	2018
79	UNWest @ 127 Pasir Ris Grove	A & A Works	Daewoo E&C	2018
80	COOS @ 103 Magret Road	ID Works	Wee Har Construction Pte Ltd	2018
81	Sennang Garden Estate	ID Works	Tien Seng Engineering Pte Ltd	2018
82	American Club	ID Works	Sunway Woodcraft Construction Pte Ltd	2018
83	LY Pop Up Store @ Changi T3 for new perfume	ID Works	Crystal Clear Management	2017
84	Royal Plaza	ID Works	ISG Asia (Singapore) Pte Ltd	2017
85	PWC	ID Works	Sunway Woodcraft Construction Pte Ltd	2017
86	311 Somerset	ID Works	J. & Rai Concept Group Pte Ltd	2017
87	Conrad Hotel	ID Works	Vigcon Construction Pte Ltd	2017
88	Mega @ Woodland Ave 12	ID Works	Wee Har Construction Pte Ltd	2017
89	22 Moonbeam Walk	ID Works	Primus Construction Pte Ltd	2017
90	SES @ Vivo City-Samsung Singapore Flagship	ID Works	J. & Rai Concept Group Pte Ltd	2017
91	40662 Nanyang Avenue	ID Works	Hup Seng Lee Pte Ltd	2017
92	Parana Hotel	ID Works	EID Projects Pte Ltd	2017
93	Tan Tock Seng Hospital	ID Works	EID Projects Pte Ltd	2017
94	Jurong Town Hall	ID Works	Sunway Woodcraft Construction Pte Ltd	2017
95	G&E 39 Bencool Road	ID Works	KEP Engineering Pte Ltd	2017
96	6 Shenton Way	A & A Works	Sunway Woodcraft Construction Pte Ltd	2017
97	CWT 47 Jalan Buncuh	KEP Engineering Pte Ltd	KEP Engineering Pte Ltd	2017
98	Bld 588 #05-03 Thomson Grove	ID Works	Levtrade Enterprise Investment Pte Ltd	2017
99	81 Kampong Bahru Road	ID Works	Chang Architects	2017
100	The Signature	ID Works	Design Studio Singapore Pte Ltd	2017
101	22E Tembeling Road	ID Works	Jia Yong Construction & Electrical Engineering Pte Ltd	2017
102	The Arcadia Gardens Penthouse #1044	ID Works	Trannglobe Interior Pte Ltd	2017
103	Blk 18 Riverside #04-47	ID Works	Levtrade Enterprise Investment Pte Ltd	2017
104	Suntec	ID Works	Lava East	2017
105	Suntec Tower 4 - Level 10	ID Works	EID Projects Pte Ltd	2017
106	The Rise @ Orley	ID Works	Zhaplin Contracts Pte Ltd	2017
107	41 Benecool Street Hotel	ID Works	EID Projects Pte Ltd	2017
108	Samsung AV	ID Works	Summer Production Pte Ltd	2017
109	Newest Head @ Steven Rd	ID Works	Sunway Woodcraft Construction Pte Ltd	2017
110	Buddi Mediation Centre @ Serangoon	ID Works	Sunway Woodcraft Construction Pte Ltd	2017
111	Buddi Mediation Centre @ The River Walk	ID Works	Sunway Woodcraft Construction Pte Ltd	2017
112	Joey Taylor	ID Works	Sunway Woodcraft Construction Pte Ltd	2017
113	Changi Prison HQ	ID Works	Precise Development Pte Ltd	2017
114	Chivas Display Cabinet @ DFS	ID Works	Cosmic Creative Pte Ltd	2017
115	DSTA Office	ID Works	Sunway Woodcraft Construction Pte Ltd	2017
116	DBS Tower	ID Works	Sunway Woodcraft Construction Pte Ltd	2017
117	The Merck group	ID Works	EID Projects Pte Ltd	2017
118	Singapore General Hospital	ID Works	EID Projects Pte Ltd	2017
119	Mia Mia Display platform @ Terminal 3 Changi Airport	ID Works	Cosmic Creative Pte Ltd	2017
120	Kallang Sector Industry	ID Works	MIF Furniture & Renovation Contractors	2017
121	The Clement Hotel	A & A Works	Star Decor & Construction Pte Ltd	2016-2017
122	Treetops Executive Residences	ID Works	Levtrade Enterprise Investment Pte Ltd	2016-2017
123	SPH Farrer Park	ID Works	Yau Lee Construction Pte Ltd	2016-2017
124	The Signature - Yuhon 51	A & A Works	Zhaplin Builder Pte Ltd	2016-2017
125	St Thomas Walk	ID Works	Kimly Construction Pte Ltd	2016-2017
126	The Glades Condo	ID Works	BC Packer's System Pte Ltd	2016-2017
127	DJO Residence	ID Works	BC Packer's System Pte Ltd	2016-2017
128	Ling Kwang Home @ Serangoon Garden Way	ID Works	Zhaplin Contracts Pte Ltd	2016-2017
129	Victoria's Secret @ Mandarin Gallery	ID Works	ISG Asia (Singapore) Pte Ltd	2016
130	Michael Kors @ Mandarin Gallery	ID Works	ISG Asia (Singapore) Pte Ltd	2016
131	The UKA Centre	A & A Works	Urban Redevelopment Authority	2016
132	The Terrace Condo	ID Works	China Construction Realty Co Pte Ltd	2016
133	Hotel Hollywood @ 61 Lor 8 Geylang	ID Works	EID Projects Pte Ltd	2016
134	Jurong Medical Centre	ID Works	EID Projects Pte Ltd	2016
135	Mount Alvernia Hospital	ID Works	EID Projects Pte Ltd	2016
136	The Crest Condo	ID Works	Hertel Tinding Pte Ltd	2016
137	Gospel Light Christian Church	ID Works	Hong Lat Construction Pte Ltd	2016
138	YCH - Jurong west ave 2	ID Works	HPC Builders Pte Ltd	2016
139	Dunman Regency	ID Works	GHC Building Construction Pte Ltd	2016
140	ASM - Warehouse	ID Works	Kimly Construction Pte Ltd	2016
141	Leaving Point	ID Works	H P Construction & Engineering Pte Ltd	2016
142	Waterfront	ID Works	J-Plan Associates Pte Ltd	2016
143	Changi T1 Visitor Office	ID Works	Tanglin Corporation Pte Ltd	2016
144	Eco Sanctuary	ID Works	Tien Seng Construction Pte Ltd	2016
145	TWC - Warehouse	ID Works	HPC Builders Pte Ltd	2015-2016
146	Spring Side	ID Works	Fox Woodmaking Pte Ltd	2015-2016
147	Regency House	ID Works	Falcon Incorporation Pte Ltd	2015-2016



S.NO	PROJECT	DESCRIPTION OF WORK	CLIENT	YEAR
148	Amber Sky	ID Works	I-Plan Associates Pte Ltd	2015-2016
149	NTUC Development	ID Works	Yongway Contract Construction Pte Ltd	2015-2016
150	The Outrigger @ 24 Geylang Road	ID Works	NSC Construction and Machinery Pte Ltd	2015-2016
151	Raywood	ID Works	Zhapin Contract Pte Ltd	2015
152	Apple Bay	ID Works	Zhapin Contract Pte Ltd	2015
153	V Hotel	ID Works	ED Projects Pte Ltd	2015
154	GWA - Nohon International School	ID Works	Yongway Contract Construction Pte Ltd	2015
155	Overseas Family School	ID Works	Tongjin Corporation Pte Ltd	2015
156	Quinn Downtown Hotel	ID Works	Pakon Incorporation Pte Ltd	2015
157	Bank Of China - Kallang	ID Works	Yongway Contract Construction Pte Ltd	2015
158	Bank Of China - Chinatown	A&A Works	Yongway Contract Construction Pte Ltd	2015
159	OCBC Bank Plaza	A&A Works	HPC Building Pte Ltd	2015
160	Nanyang Home - Jersey East	ID Works	HPC Building Pte Ltd	2015
161	Nanyang Home - Bishan	ID Works	HPC Building Pte Ltd	2015
162	Kohland Clubhouse	ID Works	Nathan Farmhouse Trading Pte Ltd	2015
163	ACB Bank	ID Works	Pan Pte Ltd	2015
164	The Seaview	ID Works	New Pace Furnishing Pte Ltd	2014-2015
165	115 Hume Ave 3	ID Works	HPC Building Pte Ltd	2014-2015
166	Typhoid Hotel	ID Works	Yongway Contract Construction Pte Ltd	2014-2015
167	Dorchester East Coast Road, Raffles Main Block	ID Works	Yongway Contract Construction Pte Ltd	2014-2015
168	Forequays @ Park Road	A&A Works	Zhapin Contract Pte Ltd	2011-2014
169	National Design Centre	ID Works	Nycon Construction Pte Ltd	2011-2014
170	National Heart Centre	ID Works	Nanyang Woodcraft Construction Pte Ltd	2011-2014
171	Mar	ID Works	Scenecol Building Pte Ltd	2012-2014
172	Credit Suisse Singapore	ID Works	Hanau Corporation	2014
173	Sun Plaza	A&A Works	General Industrial Pte Ltd	2014
174	K.T. Yang Department Store	ID Works	Nanyang Woodcraft Construction Pte Ltd	2014
175	Woodlands Condo	ID Works	Amgen Made Singapore Pte Ltd	2014
176	Solihua Condo	ID Works	I-Plan Associates Pte Ltd	2014
177	Sophia Residence	ID Works	Kinley Construction Pte Ltd	2014
178	Luna Condo	ID Works	New Pace Furnishing Pte Ltd	2014
179	The Tummy Condo	ID Works	New Pace Furnishing Pte Ltd	2014
180	Kenneth Condo	ID Works	Zhapin Contract Pte Ltd	2014
181	Specterwood Residence	ID Works	Zhapin Contract Pte Ltd	2014
182	The Shree Condo	ID Works	Zhapin Contract Pte Ltd	2014
183	Solihua Condo	ID Works	Zhapin Contract Pte Ltd	2014
184	Lincoln Station	ID Works	Koh Brothers Building & Civil Engineering	2014
185	Yuhua	ID Works	New Pace Furnishing Pte Ltd	2014
186	Rapier Hotel - Marbury Hill	ID Works	CSG Group Pte Ltd	2014
187	Mandarin Hotel	ID Works	Yongway Contract Construction Pte Ltd	2014
188	General Site Office @ 1 Depot Close	ID Works	General Industrial Pte Ltd	2014
189	General Site Office @ Park Road Central	ID Works	General Industrial Pte Ltd	2014
190	Outward Bound Singapore	ID Works	Kalvary Construction Pte Ltd	2014
191	East Point Mall	ID Works	Nycon Construction Pte Ltd	2014
192	Ngee Ann Poly	ID Works	Nycon Construction Pte Ltd	2014
193	Zone	ID Works	Zhapin Contract Pte Ltd	2014
194	Le-Sun	ID Works	Zhapin Contract Pte Ltd	2014
195	Brands Hotel	ID Works	Zhapin Contract Pte Ltd	2014
196	Be-A-B	ID Works	Zhapin Contract Pte Ltd	2014
197	K & S Shop	ID Works	Zhapin Contract Pte Ltd	2014
198	Marmalade's Station	ID Works	Foo Woodworking Pte Ltd	2014
199	NUS	ID Works	CSG Group Pte Ltd	2014
200	RTD	ID Works	Foo Woodworking Pte Ltd	2014
201	Raffles City Tower 2001	ID Works	General Industrial Pte Ltd	2012-2013
202	Solar Sun Park	ID Works	Hardest Woodworking Pte Ltd	2012-2013
203	Solihua	ID Works	Zhapin Contract Pte Ltd	2012-2013
204	OCBC Centre	ID Works	Cincoali Safety Glass Pte Ltd	2012-2013
205	Standard Chartered Bank	ID Works	General Industrial Pte Ltd	2012
206	Raffles City Tower	ID Works	General Industrial Pte Ltd	2012
207	Marmalade's and	ID Works	Decor Art & Colour Pte Ltd	2012
208	Raffles City Tower	ID Works	Cincoali Safety Glass Pte Ltd	2012
209	Architects These Goods	ID Works	Hardest Woodworking Pte Ltd	2012
210	Solar Sun Park	ID Works	Hardest Woodworking Pte Ltd	2012
211	Marmalade's Station	ID Works	Scenecol Building Pte Ltd	2012
212	Warner's units block up	ID Works	Yongway Contract Construction Pte Ltd	2012
213	Zhapin Centre @ The Plaza Kovan Hospital	ID Works	Hillman Singapore Pte Ltd	2012
214	Don't Worry	ID Works	ED Projects Pte Ltd	2012
215	East Village Hotel	ID Works	I-Plan Associates Pte Ltd	2012
216	Bungalow 2 units @ Chai Road	ID Works	Mamona Interior Pte Ltd	2012
217	Em Villa Club House	ID Works	Nathan Pte Ltd	2012
218	Kambala @ Zhen Shan Mall	ID Works	Kambala Restaurant (Zhen Shan Valley) Pte Ltd	2012
219	Trish Vogue @ Bishan Mall #02-07	ID Works	Zhapin Contract Pte Ltd	2012
220	Foto Express @ Bishan Mall #02-08	ID Works	Zhapin Contract Pte Ltd	2012
221	Beauty By Nature @ 108 #01-49/50	ID Works	Zhapin Contract Pte Ltd	2012

S.NO	PROJECT	DESCRIPTION OF WORK	CLIENT	YEAR
222	Dragon Style @ Westgate #02-29	ID Works	Zhapin Contract Pte Ltd	2012
223	C&S Shop @ Terminal 1	ID Works	Zhapin Contract Pte Ltd	2012
224	Dragon Style @ Budget Junction #1-10	ID Works	Zhapin Contract Pte Ltd	2012
225	Guardian @ Takahong #5, #01-16/23	ID Works	Zhapin Contract Pte Ltd	2012
226	Plaza Singapura @ Dorby Ghaur	ID Works	Zhapin Contract Pte Ltd	2012
227	C&S Shop @ Ngee Ann City	ID Works	Zhapin Contract Pte Ltd	2012
228	Dragon Style @ Parkway Parade #01-56/57/58	ID Works	Zhapin Contract Pte Ltd	2012
229	456 Hulse Road Show Room	ID Works	Zhapin Contract Pte Ltd	2012
230	Canro	ID Works	New Pace Furnishing Pte Ltd	2012
231	Chang Huijooan Park Central 1	ID Works	SINEMU	2012
232	East Village Hotel	ID Works	I-Plan Associates Pte Ltd	2012
233	PowerBank - Dakota	ID Works	Scenecol Building Pte Ltd	2012
234	DBS New Office Tower	ID Works	Mamona Interior Pte Ltd	2012
235	Indulgence @ Odey Walk	ID Works	Zhapin Contract Pte Ltd	2012
236	Harveston Hotel	ID Works	MVE ID Projects Pte Ltd	2012
237	Canro @ B&C	ID Works	PACE FURNISHING	2012
238	DBS Asia and 6 Office for Command Centre	ID Works	Yongway Contract Construction Pte Ltd	2012
239	Kangaroo @ K - The Store	A&A Works	Zhapin Contract Pte Ltd	2012
240	Marmalade Tower 1 (DBS New Office Tower)	ID Works	Mamona Interior Pte Ltd	2012
241	Miner 牛車水 Noodle Road	ID Works	PACE FURNISHING	2012
242	Norona 牛車水 - SGRA	ID Works	Zhapin Contract Pte Ltd	2012
243	NV Residence	ID Works	I-Plan Associates Pte Ltd	2012
244	KFC @ RT, TMAH	ID Works	Yongway Contract Construction Pte Ltd	2012
245	Raffles City	A&A Works	Yongway Contract Construction Pte Ltd	2012
246	The Nations	A&A Works	PACE FURNISHING	2012
247	Seal	ID Works	MVE ID Projects Pte Ltd	2012
248	Sophia Residence	ID Works	Yoh Lim Construction Pte Ltd	2012
249	Burn	ID Works	PACE FURNISHING	2012
250	TEMASIA BUILDING	A&A Works	MVE ID Projects Pte Ltd	2012
251	111 Howard Hill 111 勿拉士	ID Works	Scenecol Building Pte Ltd	2012
252	Burnage @ Sent Road	ID Works	PACE FURNISHING	2011
253	EL ORBON	ID Works	Scenecol Building Pte Ltd	2011
254	THE GALL @ ROYANG	ID Works	Scenecol Building Pte Ltd	2011
255	Jardine	ID Works	I-Plan Associates Pte Ltd	2011
256	JARDINE	ID Works	Scenecol Building Pte Ltd	2011
257	KOVIN	ID Works	Scenecol Building Pte Ltd	2011
258	NUS	ID Works	Shang Hui and Pte Ltd	2011
259	KASIA @ ILLIAS	ID Works	Scenecol Building Pte Ltd	2011
260	North Square	ID Works	Hardest Interior	2011
261	Standard Chartered Bank Building	ID Works	KITWALL SAFETY GLASS PTE LTD	2011
262	Tanwan Wana	ID Works	Scenecol Building Pte Ltd	2011
263	Takik Kuan Lee, H	ID Works	BOPI (S) PTE LTD	2011
264	Tong Sang - Shu Road Rd	ID Works	Hardest Woodworking Pte Ltd	2011
265	WATERBANK @ DAKOTA	ID Works	Scenecol Building Pte Ltd	2011
266	WATERBANK KEY	ID Works	Scenecol Building Pte Ltd	2011
267	WATERBANK WAVE	ID Works	Scenecol Building Pte Ltd	2011
268	Wanma Rm	ID Works	Hardest Woodworking Pte Ltd	2011
269	Woodda (門樓門樓)	ID Works	PACE FURNISHING	2011
270	11 Jeyamun	ID Works	Hardest Interior	2010
271	Alsyah Road	ID Works	PACE FURNISHING	2010
272	The Club (門樓門樓)	ID Works	PACE FURNISHING	2010
273	GRANGE INFINITE	ID Works	Scenecol Building Pte Ltd	2010
274	Grange Rd	ID Works	Hardest Woodworking Pte Ltd	2010
275	Jiluhun (門樓門樓)	ID Works	PACE FURNISHING	2010
276	THE SUTTO @ Dover	ID Works	Equinox Construction Pte Ltd	2010
277	KLASIS @ B&C	A&A Works	Hardest Woodworking Pte Ltd	2010
278	PECK ELL ROAD	A&A Works	Hardest Interior	2010
279	Shedford Road	ID Works	Hardest Interior	2010
280	Takik Road (門樓門樓)	ID Works	PACE FURNISHING	2010
281	Wika Road	ID Works	Hardest Interior	2010
282	118 Grange Road	ID Works	Majors Wood Enterprise	2010
283	CARDINELL	A&A Works	Scenecol Building Pte Ltd	2009
284	CASCADA	A&A Works	Scenecol Building Pte Ltd	2009
285	GRAND DOCKREES	ID Works	Scenecol Building Pte Ltd	2009
286	Harold Road	ID Works	PACE FURNISHING	2009
287	Sedona (門樓門樓)	ID Works	PACE FURNISHING	2009
288	MINIE	ID Works	Scenecol Building Pte Ltd	2009
289	Vida (門樓門樓)	ID Works	PACE FURNISHING	2009
290	KARIE @ WEST COAST	ID Works	Scenecol Building Pte Ltd	2008
291	LACASA	ID Works	Scenecol Building Pte Ltd	2007
292	WOMEN'S 1126 LINE'S	A&A Works	Scenecol Building Pte Ltd	2007
293	KITTYLIGHT	A&A Works	Scenecol Building Pte Ltd	2006
294	THE ICON	ID Works	Scenecol Building Pte Ltd	2006